

# EXTRA ZINE ISSUE # 41



UNREAL CITY,  
VOLUME ONE, NO.1 |  
SPRING/SUMMER 1986



"BITUMEN RIVER GALLERY INC. WAS OFFICIALLY OPENED ON 4 APRIL 1981 WITH AN EXHIBITION OF SCREEN-PRINTED POSTERS ENTITLED *BILL POSTERS APPRECIATED.*"  
BITUMEN RIVER GALLERY : BEYOND THE SHACK IN MANUKA CARPARK



THAT SPACE, REAR 20  
CHARLOTTE STREET,  
BRISBANE [1984-1988]

**Cultural exchange programs** were an increasingly common feature of Australian artist-run spaces as they forged new dialogues, new networks and new exhibition opportunities through creative practice, self-publishing and exhibition events throughout the 1980s. This *memory zine* focuses on one such exchange between **Bitumen River Gallery** (Canberra) and **That Space** (Brisbane) in 1987. The collection remixed and presented here draws from That Space archives. It features two interlinked group exhibitions **Nowhere/ Utopia** and **Anywhere** which both responded to local conditions.



EX DE MEDICI IS AN AUSTRALIAN ARTIST, WHOSE WORKS INCLUDE INSTALLATION ART, PAINTING, PHOTOGRAPHY, AND DRAWING. THEY WERE A FOUNDATIONAL MEMBER OF BITUMEN RIVER GALLERY IN CANBERRA AND A PARTICIPANT IN ARTIST EXCHANGE PROGRAMS ORGANISED BETWEEN THAT CONTEMPORARY ART SPACE AND BITUMEN RIVER IN THE 1980S. EXHIBITIONS INCLUDED THE NOWHERE UTOPIA AND ANYWHERE EXHIBITIONS STAGED AT BOTH GALLERIES IN 1987. IN 1988, WHILE IN MELBOURNE, SHE RECEIVED HER FIRST TATTOO. FOR THE NEXT 12 YEARS SHE WORKED AS A TATTOO ARTIST. SHE WAS AWARDED AN AUSTRALIAN COUNCIL OVERSEAS DEVELOPMENT GRANT AND APPRENTICED TO A TATTOO ARTIST IN LOS ANGELES. DURING THE 1990S SHE EXHIBITED PHOTOGRAPHS AND DRAWINGS OF HER TATTOO WORK

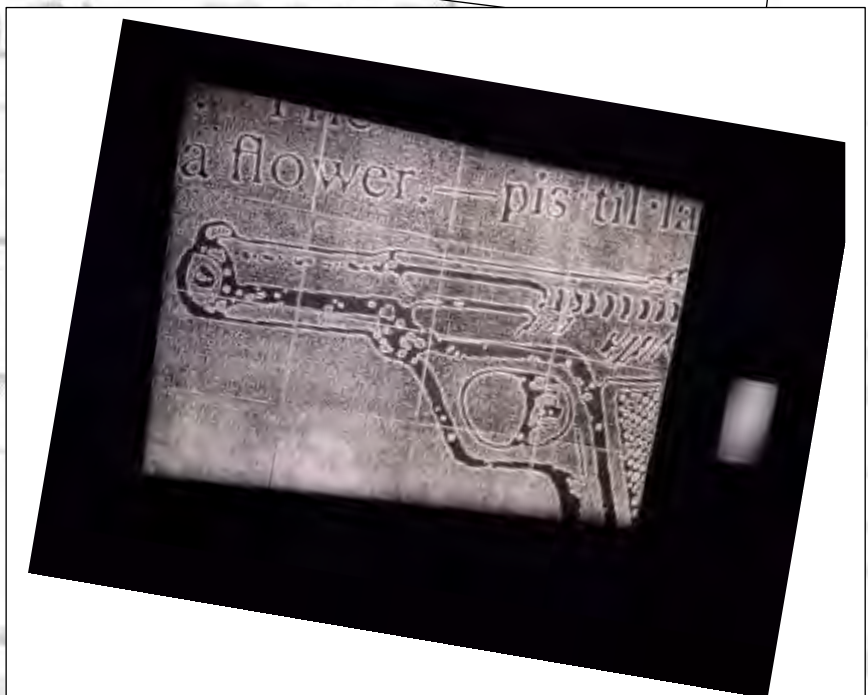
[HTTPS://EN.WIKIPEDIA.ORG/WIKI/EX\\_DE\\_MEDICI](https://en.wikipedia.org/wiki/Ex_De_Medici)

AUSTRALIAN ARTIST EX DE MEDICI IS DEDICATED TO UNCLOAKING ABUSES OF POWER AND REVEALING THEIR EFFECTS ON EVERYDAY LIVES. SHE CAPTIVATES US WITH BEAUTY, ONLY TO BRING US FACE TO FACE WITH THE WICKEDNESS OF OUR OWN DESTRUCTIVE HABITS. AT THE HEART OF DE MEDICI'S PRACTICE LIES HER CONCERNS FOR THE VALUE AND FRAGILITY OF LIFE, THE CORRUPTING EFFECTS OF CAPITALISM AND CONSUMPTION, AND HUMANITY'S IMPACT ON THE NATURAL WORLD.

'BEAUTIFUL WICKEDNESS' SURVEYS THE ARTIST'S 40-YEAR CAREER, SHOWCASING HER EXEMPLARY SKILLS AND HER INCISIVE COMMENTARY ON CONTEMPORARY LIFE.

24 JUN - 2 OCT 2023

[HTTPS://WWW.QAGOMA.QLD.GOV.AU/L  
EARN/EDUCATION-RESOURCES/EX-DE-](https://www.qagoma.qld.gov.au/learn/education-resources/ex-de-)





**UTOPIA** (NO PLACE)

from Bitumen River Gallery, Canberra

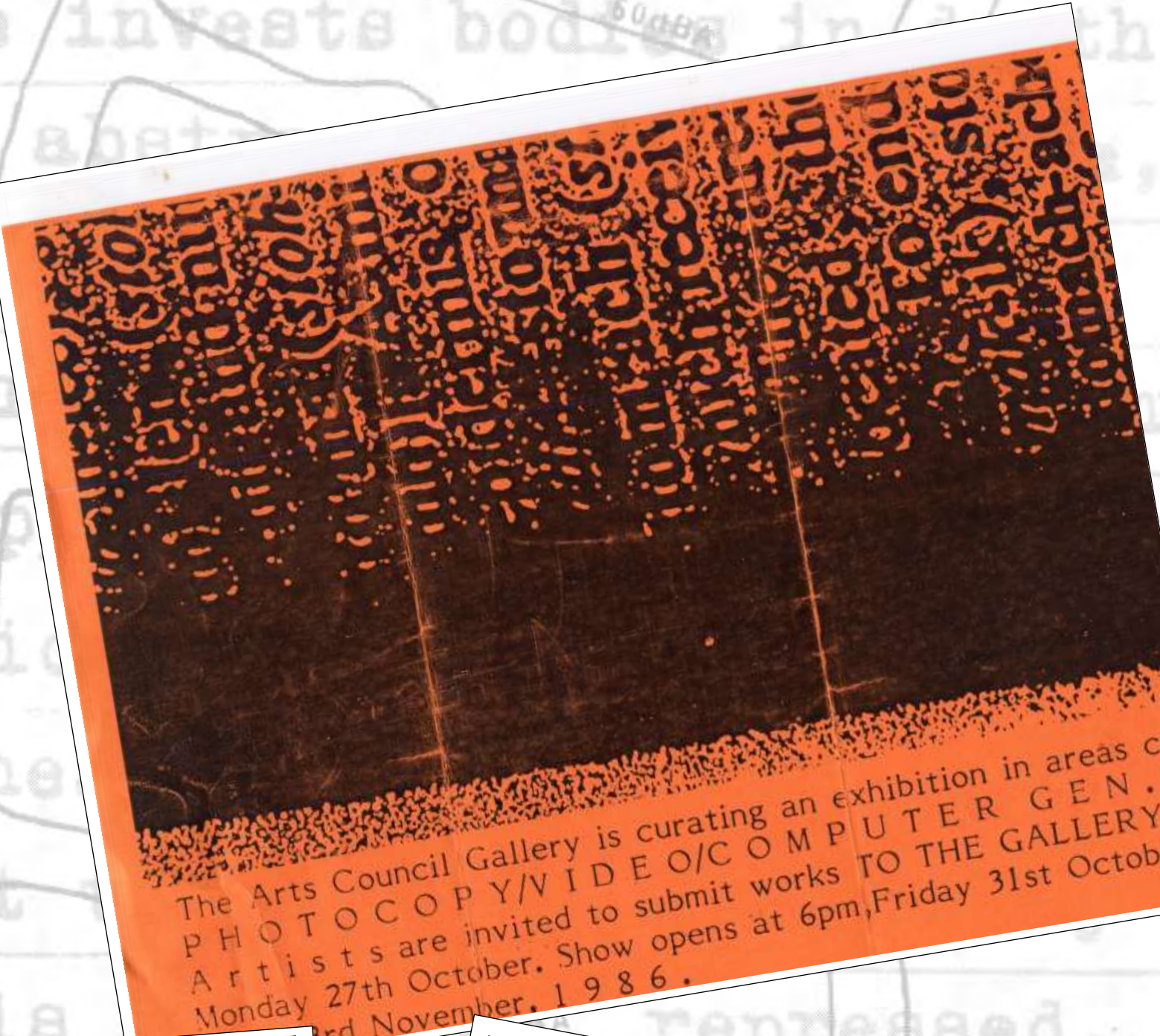
Our society is one not of the spectacle, but of surveillance; under the surface of images, one invests bodies in depth; behind the great abstraction of exchange, there continues the meticulous, concrete training of useful forces; the directors of communication are the supports of an accumulation and a centralization of knowledge; the play of signs defines the anthologies of power; it is not that the beautiful totality of the individual is amputated, repressed, altered by our social order, it is rather that the individual is generally fabricated in it, according to a whole technique of forces

**PHOTO COPY FAX** 3.14 MAR. OPENS 7PM ON 3RD MAR

AT THAT SPALL HEAT 21 CHARLOTTE ST BRISBANE PH (07) 2212842



BITUMEN RIVER GALLERY IS AN ARTIST-RUN SPACE. THE TERM ARTIST-RUN SPACE IS A CONVENIENT DESCRIPTION THAT EMBRACES A WIDE RANGE OF ART ORGANISATIONS, INITIATED BY AND FOR ARTISTS TO PROVIDE A STRUCTURE IN WHICH ARTISTS CAN WORK, EXHIBIT, EXCHANGE IDEAS, PROMOTE DEVELOPMENT AND MAINTAIN IT, AND, IN PARTICULAR ARTIST-RUN SPACES FOSTER GRASS ROOTS ACTIVITIES AND EXPERIMENTAL VISUAL ARTS PRACTICE. ARTIST-RUN SPACES BY THEIR VERY NATURE EXIST ON THE PERIPHERIES OF THE ESTABLISHED ART STRUCTURE, OFTEN APPEARING AND DISAPPEARING, FRAGMENTED, INDEPENDENT AND A SEEMINGLY ISOLATED PHENOMENA. [ERICA GREEN, CO-ORDINATOR, BITUMEN RIVER GALLERY, 1986. UNREAL CITY, 1986, PP.3-4]



The Arts Council Gallery is curating an exhibition in areas of  
PHOTOCOPY/VIDEO/COMPUTER GEN.  
Artists are invited to submit works TO THE GALLERY  
Monday 27th October. Show opens at 6pm, Friday 31st October  
Monday 3rd November, 1986.



In Canberra, both the Bitumen River Gallery and the nearby Arts Council Gallery were inviting artists working with varied technologies to present new works. In Brisbane, artist-run spaces were continuing to present works concerning new technologies, photocopying (large format/full color), analogue video, computer generated imagery, facsimile and super 8 filmmaking where new, recent and emergent technologies enabled new artistic applications of a DIY ethos, an essentially democratising ethos evolving from punk and post punk for contemporary artmaking.



**BITUMEN  
RIVER  
NEWSLETTER  
NOV. 1986**

ISSN 0814 2297

Building off foundational work at That Space undertaken in 1984 to 1986 with regional exchanges – in both Gladstone and Townsville - an international exchange with the downtown artist-run space No Se No in New York City and with YYZ Artists Outlet in Toronto we sent out a series of letters to artist-run spaces interstate and overseas to instigate an artist exchange program as a part of our ongoing collective activity, and an intentionality towards sustainability.

We had developed a robust relationship with Bitumen River Gallery over time, largely through telephone conversations and mail correspondences with their co-ordinator Erica Green. In late 1986 we formalised the **Anywhere** exhibition concept, in a response to locality and what we, and so many artist-run spaces were experiencing at the time, as ongoing marginalisation from the mainstream arts ecology since we began operations in November 1984. A

Image below: Invitation designed in collaboration with Brian Doherty and Malcolm Enright. We sourced the globe image from a Jacaranda World Atlas in my childhood collection.



ANYWHERE ARTISTS INCLUDED PETER ANDERSON, LEANNE RAMSAY, ANNA SZOLDOS, SALLY HART, BRIAN DOHERTY, JAY YOUNGER AND PAUL ANDREW.

NOWHERE/UTOPIA ARTISTS INCLUDED STEPHANIE RADOK, ANTHONY WORRALL, NEIL ROBERTS, CHRISTINE OLSEN, EMPIRE CIRCUIT, GAYNOR CARDEW, MONICA LUFF, ERICA GREEN, PAUL COSTIGAN, EX DE MEDICI, VEET SANDEHA, CHERLYN HOLMES, TRISH HOLLELEY, CHRISTINE GOODWIN AND STEPHEN HALL.

# ANYWHERE

'I think you recognise cities better on the atlas than when you visit them in person,' the emperor says to Marco snapping the volume shut. And Polo answers, 'travelling, you realize that differences are lost: each city takes to resembling all other cities, places exchange their form, order, distances, a shapeless dust cloud invades the continents. Your atlas preserves the differences intact: that assortment of qualities which are like the letters in a name.'

Italo Calvino Invisible Cities

## OPENING SEQUENCE

The scene is familiar. An aeroplane cruises slowly into frame across an anonymous sky. The camera pulls back to reveal a bus, wheels hitting the tarmac, a cloud of smoke. A long-shot of the runway. The aeroplane appears crowded with people. There is a closeup of the name on the tail fin. A brief cloud of taxis is seen as it taxis along the whole scene to make out the

Inside.  
EXIT.  
packs  
A

out of a door marked with bags and the occasional cover on the baggage carousel, through one arm and a briefcase crush the door, and a briefcase of bodies. Two

<https://remix.org.au/wp-content/uploads/2018/04/anywhere1987.pdf>

CANBERRA  
MAIL CENTRE  
P O BOX 100  
A C T 2600  
1987

PASSPORTS  
For Convenience Apply  
at Your Post Office

Co-ordinators  
That Space  
rear 20 Charlotte Street  
BRISBANE QLD 4000

# NOWHERE/UTOPIA

Photocopy works examining the notions of locality

Photocopy works examining the notions of locality

OPENING 11 AM SATURDAY 31 OCTOBER  
EXHIBITION CLOSES 22 NOVEMBER

CANBERRA  
CONTEMPORARY  
ART SPACE

Gallery 111, Cnr Fumeaux &  
Bougainville Sts, MANUKA ACT  
Hours: Wed-Sat 11-5pm, Sun 1-5pm  
Ph: (062) 95 7319

The Canberra Contemporary Art Space receives support from the Visual Arts/Craft Board of the Australia Council, the Federal Government's  
Funding and Advisory Body and the ACT Community Development Fund.

In her catalogue essay for *Nowhere/Utopia* titled *Under the Umbrella*, author Sylvia Kleinhert writes; "The value of this exhibition lies in the positive community action which it has realised"...



PHOTOS: NOWHERE/UTOPIA. THAT SPACE, BRISBANE, MARCH 1987. THIS IMAGE DEPICTS ARTISTS AT THE OPENING NIGHT EVENT INCLUDING BRIAN DOHERTY, URSZULA SZULAKOWSKA, ROSS PULLBROOK, EX DE MEDICI, VEET SANDEHA, ADAM BOYD, VIRGINIA BARRATT AMONG OTHERS. PHOTO BELOW ARTIST DIENA GEORGETTI OPERATING A SLIDE PROJECTOR WORK.





NOWHERE UTOPIA: Uto(no) Topo(place)

"The nameless town, unreal city, this bush we have bungled  
uncountable, uncontrollable. Here the trees weep gum  
tears. I tell you these things are real."

(Unreal City, No.1 V.1.1)

Bitumen River Gallery has been invited to exhibit at THAT SPACE in Brisbane from Sunday 1 March to Saturday 14 March 1987. The exhibition, Nowhere Utopia: Uto(no) Topo(place) will be critically assessed by the exhibitors before being sent to Brisbane.

A critical essay will accompany the exhibition. Nowhere Utopia has taken its cue from the exhibition Anywhere. Anywhere, is an exhibition of six Brisbane artists works, and is being hosted by Bitumen River Gallery from Wednesday 18 february to Sunday 15 March 1987.

"Anywhere, explores the notions of locality. The problems and challenges imposed by locality are not unique to artists in Brisbane. The history of Australian art has been a discourse on locality....."

"As local institutions do not support art outside the 'official' style, artists leave or exhibit elsewhere. However, when exhibiting elsewhere the criteria for assessment is determined by myth." (Anywhere exhibition notes)

Anywhere, serves as a framework for Nowhere Utopia, which focuses on CANBERRA'S myths and notions of locality, a locality that is instantly transported through a fax copier to anywhere.

Our exhibition will consist of two parts:

1. Unmounted photocopy images: All members are URGED to produce at least 3,4, a series, multiple image, or more. That Space is considerably larger than Bitumen River Gallery.

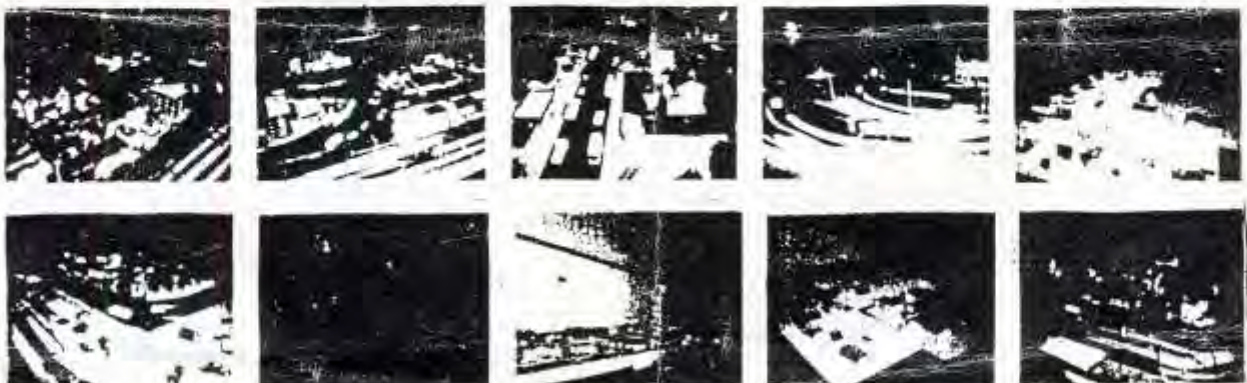
2. Text: All members are asked to submit ONE WORD ONLY PER A4 PAGE, which is descriptive of your response to Canberra. These individual words are then compiled back at BRG to form a coherent sentence. All text will be beamed up to Brisbane by fax copier\*

As you can imagine exhibiting COSTS. So we are asking members wishing to participate for a donation of \$4.00 each to assist in covering expenses. Pretty cheap to exhibit in Brisbane eh!

The deadline for all material to be delivered to Bitumen River Gallery is:

MONDAY 23 FEBRUARY 1987

For further information please contact Erica at BRG on telephone 957 319.



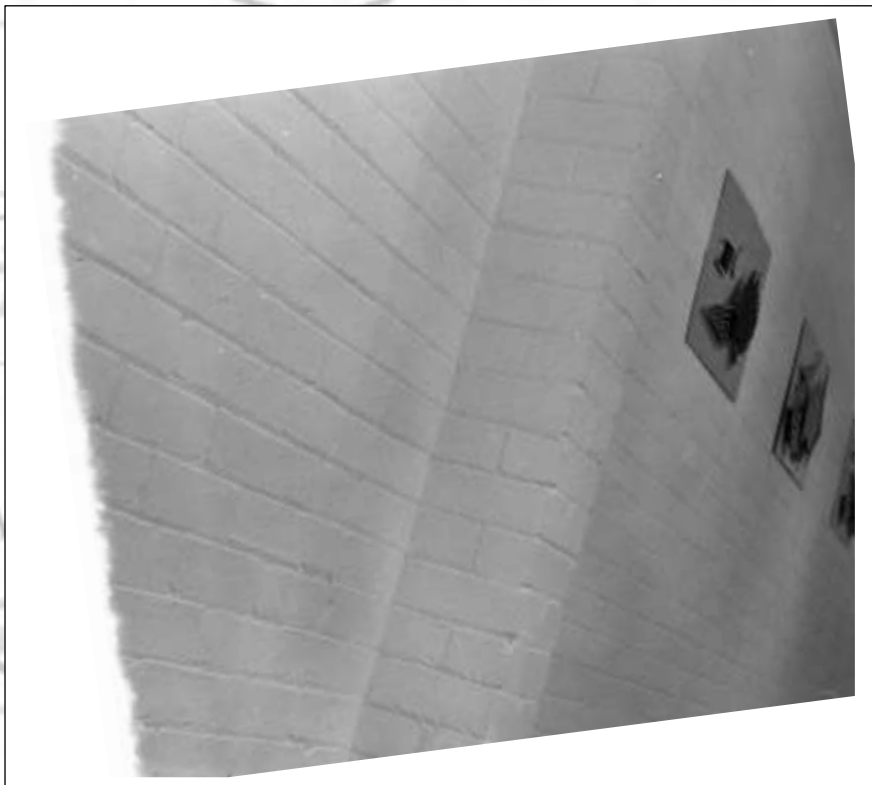
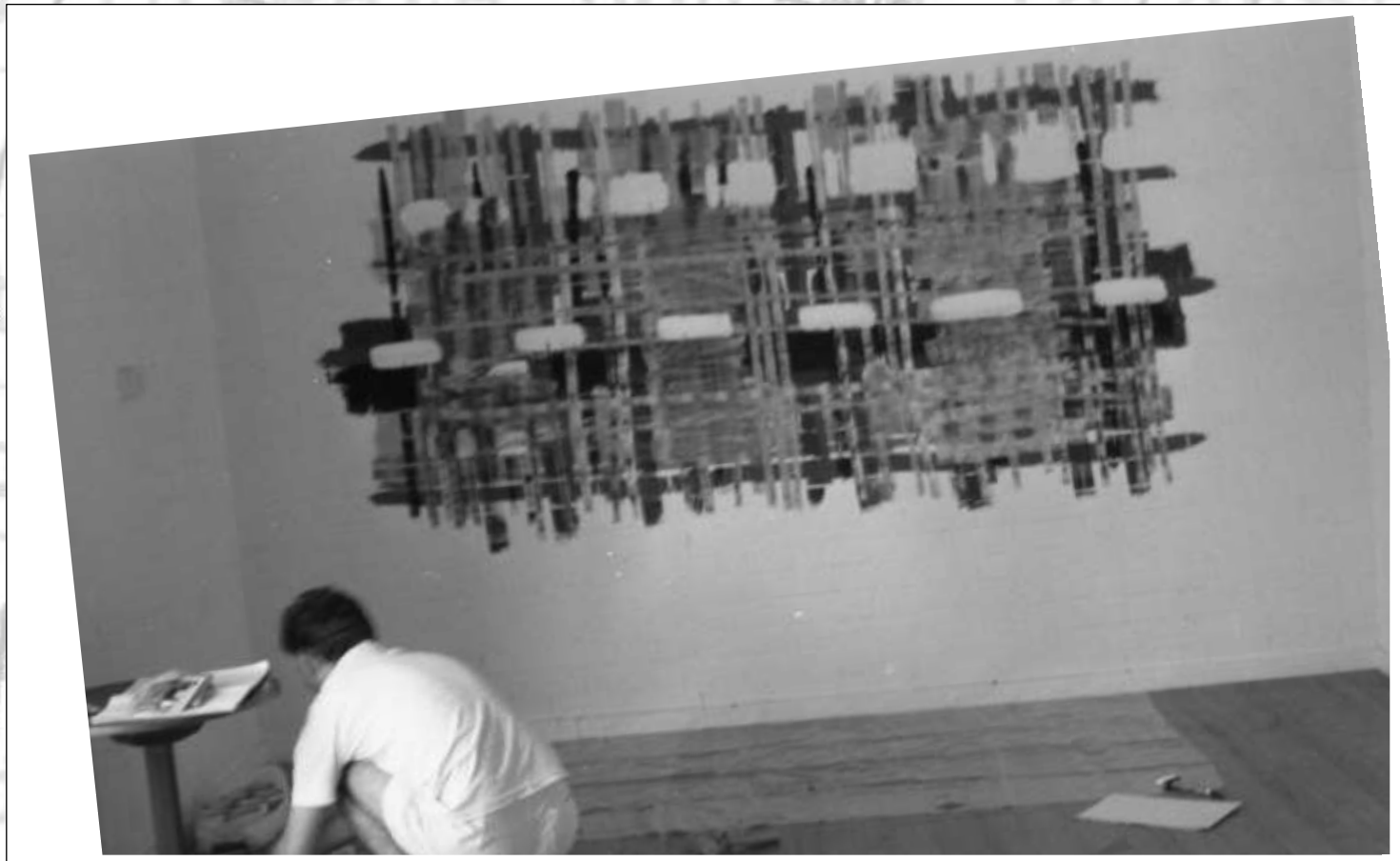


PHOTO ABOVE : ARTIST BRIAN DOHERTY LOOKING AT NOWHERE/UTOPIA PHOTOCOPY ART INSTALLATION AT THAT SPACE. PHOTO LEFT: I SEE 3D SERIES, INSTALLATION AT BITUMEN RIVER GALLERY, ARTIST PAUL ANDREW.

PHOTO BELOW: THAT SPACE PHOTOCOPY INSTALLATION DETAIL.





PHOTOS: ABOVE ARTIST BRIAN DOHERTY INSTALLING WORK AT BITUMEN RIVER, AND BELOW INSTALLATION VIEW WORK BY ARTISTS PAUL ANDREW AND SALLY HART. WHILE CANBERRA ARTISTS EXPLORED XEROGRAPHY, BRISBANE ARTISTS EXPLORED A RANGE OF TECHNOLOGIES FROM THE HAND MADE TO PHOTOGRAPHY AND CREATIVE WRITING.



PHOTO: ARTIST  
EUGENE CARCHESIO AT  
THE OPENING NIGHT  
OF NOWHERE/UTOPIA AT  
THAT SPACE,  
BRISBANE.

IMAGE BELOW:  
ENABLING A CULTURE  
OF ACKNOWLEDGEMENT  
WAS AN IMPORTANT  
ELEMENT OF ARTIST-  
RUN ACTIVITY.

BOTTOM IMAGE: THAT  
SPACE STUDIOS 1987..

THE ACKNOWLEDGEMENTS

Bitumen River Gallery would like to thank Sylvia Kleinert for her positive contributions to the exhibition; the Queenslanders, Anna Zsoldos, Jay Younger, Leanne Ramsay, Sally Hart, Brian Doherty, Paul Andrew and Peter Anderson for their exhibition Anywhere, which opened at Bitumen River Gallery on 18 February 1987; Paul Andrew from That Space; Erica Green the Co-ordinator of Bitumen River Gallery; the Bitumen River Gallery Management Committee; Ex de Medici and Veet Sandeha for travelling north to install the exhibition; and all the participating artists; all of whom made this exhibition possible.





ABOVE: PHOTOCOPY INSTALLATION EXHIBITION WITH ARTIST AND THAT SPACE CO-ORDINATOR PAUL ANDREW, AND BELOW WITH THAT SPACE MEMBER AND TREASURER COLLEAGUE ARTIST JAY YOUNGER 1985. PHOTOGRAPHER THE SHARED CAMERA

## Bitumen River Gallery : beyond the shack in Manuka Carpark

Bitumen River Gallery Inc. was officially opened on 4 April 1981 with an exhibition of screenprinted posters entitled *Bill Posters Appreciated*. The exhibition provided a platform for forging connections between art and the social, political and economic conditions of the community, a concern that was a key factor that led to the establishment of the Gallery.

The concept of an alternative exhibition space in Canberra arose from a group of people from Jobless Action, the Canberra School of Art and Megalo International Silkscreen Collective, who perceived a need to take charge of their situation in order to show and in turn validate their own work and the work of their peers. At that time there existed limited opportunities for young and unestablished artists, and, in particular, artists who were working within a radical social and political framework. The Gallery provided an accessible exhibition space that was co-ordinated by a group of artists on a collective, cost-shared, shared responsibility basis. The building was made available by the Department of the Capital Territory.

In the ensuing years Bitumen River Gallery attracted funding from the local and federal funding authorities. Today, Bitumen River Gallery administers grants from the Department of Territories towards a co-ordinator's salary and operational costs and in 1985 and 1986 received funding from the Visual Arts Board of the Australia Council towards artists' exhibition fees. Funding has enabled the Gallery to provide assistance to artists to offset exhibition expenses and to engage a professional and dynamic practice in all aspects of the Gallery's activities.

In the five years since opening, Bitumen River Gallery has evolved, a process necessitating change: the structural improvements to the building; the election of a Management Committee to represent the collective membership that has in 1986 grown to some 120 individuals and organisations; the implementation of administrative and management procedures; the employment of a part-time co-ordinator in 1983, then a full-time co-ordinator in 1984; and a policy and program of activities that has re-addressed and re-assessed the directions of the Gallery in response to the prevailing membership and contemporary arts practice over time.

The major objectives of Bitumen River Gallery are to promote and present contemporary and community visual arts activities, to undertake an educational role and to encourage and assist artists working in the ACT, specifically emerging artists. Bitumen River Gallery is a resource centre disseminating information on and for the visual arts and artists, an umbrella organisation representing artists on both local and national issues, holds workshops and lectures, and has a regular exhibition program that changes every three weeks.

Bitumen River Gallery is an artist-run space. The term artist-run space is a convenient description that embraces a wide range of arts organisations, initiated by and for artists to provide a structure in which artists can work, exhibit, exchange ideas, promote development and maintain it, and, in particular, artist-run spaces foster grass roots arts activities and experimental visual arts practice.

Artist-run spaces by their very nature exist on the peripheries of the *established arts structure*, often appearing and disappearing, fragmented, independent, and a seemingly isolated phenomena.

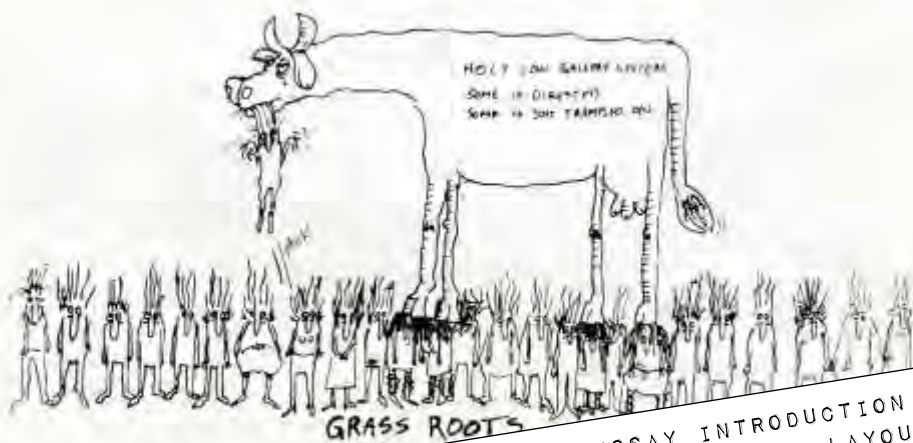


IMAGE ABOVE, AND BELOW: ERICA GREEN'S ESSAY INTRODUCTION IN UNREAL CITY, VOLUME ONE, NO.1. EDITORS STEPHANIE RADOCK, EX DE MEDICI. LAYOUT AND DESIGN EX DE MEDICI. STEPHANIE RADOCK.

invests bodies in depth  
abstraction of exchange,

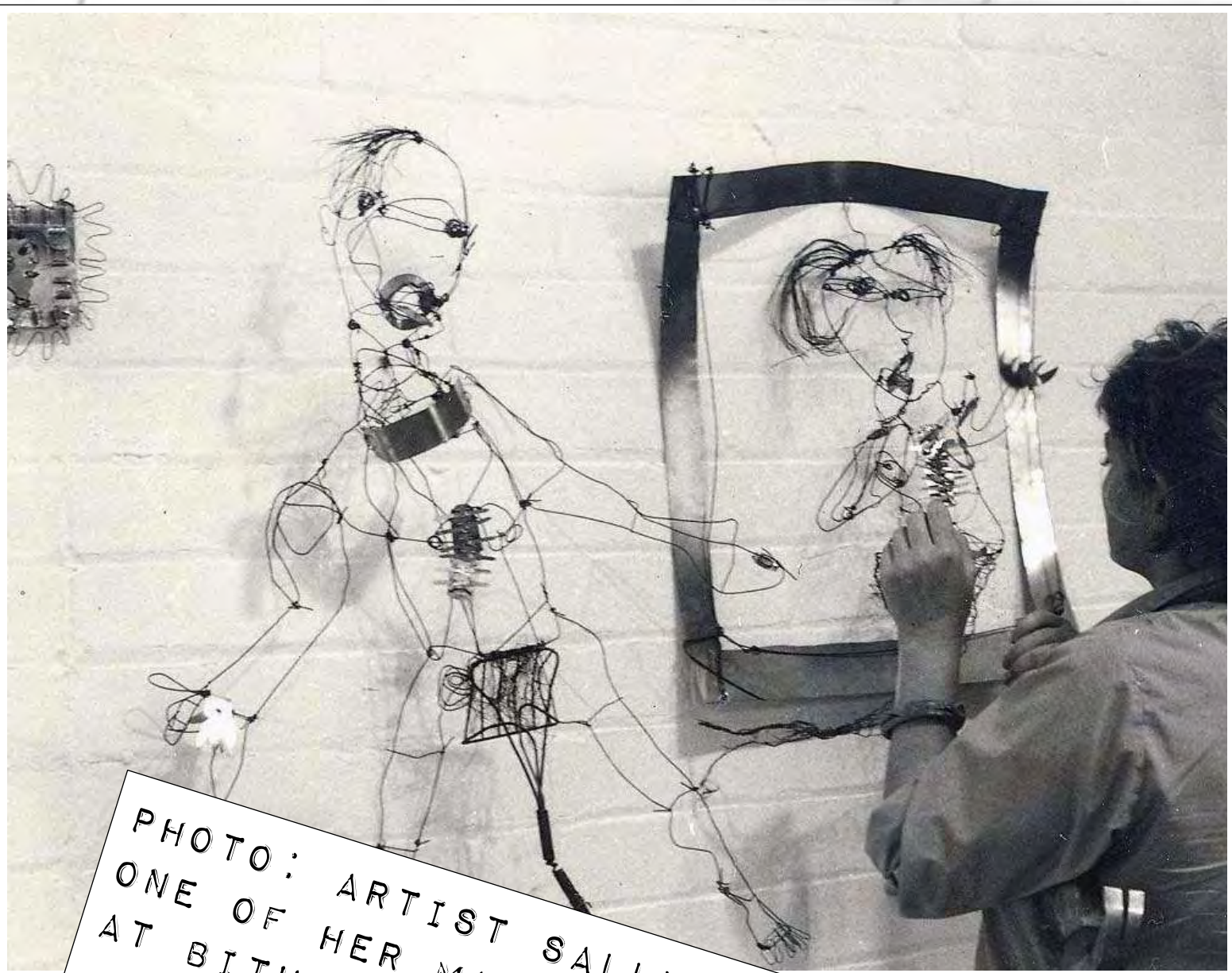


PHOTO: ARTIST SALLY HART INSTALLING  
ONE OF HER MANY WIRE ASSEMBLAGE WORKS  
AT BITUMEN RIVER GALLERY.  
PHOTOGRAPHER: ANNA SZOLDOS

rather  
is care  
to a whole technique  
and bodies.

At this time in Australia, there is a particular growth in artist-run spaces. Recent years have seen the establishment of Art Zone, Cockatoo Workshops, First Draft, Kelly Street Kollektiv, Roar Studios, That Space, Union Street and, of course, Bitumen River Gallery. The co-incidence of the emergence of artist-run spaces is not confined to Australia, an occurrence that places these spaces within a distinctive and identifiable national and international structure sustaining the development of contemporary visual arts practice.

Artist-run spaces are not peculiar to the 1980s but a continuing tradition. In Australia, this tradition of artists' initiatives to broaden existing opportunities, can conceivably extend as far back as the *9 x 5 Impressions* exhibition organised by Streeton, Roberts and other artists from the Heidelberg School. Other examples which followed were the formation of the Australian Artists Association from 1886 and 1888 and the Contemporary Artists Society which was founded in Melbourne in 1938, which through its various State branches played an important role in the sponsoring of artist-run organisation of exhibitions, critical debate and publications up until the early 1970s.

During the late 60s and early 70s contemporary visual arts activity dictated a need and subsequently witnessed a proliferation of artist-run spaces such as: A Space, the Alternative Museum, Apple, Artists Space, Art Metropole, Gain Ground, Womens Space, Womens Building, 98 Greene Street, 112 Green Street, and 105 Hudson Street in North America; and in Australia, Art Unit, Art Projects, AVAGO, Betaville, Creative Space, Experimental Art Foundation, Hardened Arteries, Inhibodress, Roundspace, South Australia Workshop, Tin Sheds, and the Womens Art Movement, just to name a few. Towards the end of the 70s circumstances led to a shift in emphasis in contemporary visual arts practice, a restructuring of arts organisations including artist-run spaces such as the Experimental Art Foundation, or alternatively many spaces, such as Inhibodress, simply folded. The circumstances that prompted this occurrence is attributable to two primary reasons. Firstly, there was an increase in government patronage and support through the establishment of the Contemporary Art Spaces - a network of State-based publicly funded contemporary visual arts organisations that comprise Artspace and the Australian Centre of Photography in NSW, the Australian Centre for Contemporary Art in Victoria, Chameleon in Tasmania, the Experimental Art Foundation in South Australia, the Institute of Modern Art in Queensland, and Praxis in Western Australia. Secondly, many of the spaces established in this period lost their initial impetus.

The advent of artist-run spaces in the 70s had a profound impact on artist - gallery dynamics. A dynamic motivated by an ever-increasing demand by artists upon the State and other publicly funded galleries and the commercial galleries, together with a perceived rigidity of existing structures, rendering these spaces often inaccessible or inappropriate to many artists. A dynamic that nevertheless seeded the emergence of a new generation of artist-run spaces in the 1980s.

In 1986 Bitumen River Gallery celebrated its 5th birthday. During the past five years, the Gallery has played an important and unique role in the local arts community. It is also a part of a national network of artist-run spaces, a phenomena that can only maintain its vitality through the active support and commitment of the Collective.

Erica Green  
Co-ordinator, Bitumen River Gallery, 1986

References:

Bernice Murphy *Alternative Space Part I and II* Art Network No. 6 & No. 7, 1982





invests bodies in depth  
abstraction of exchange,

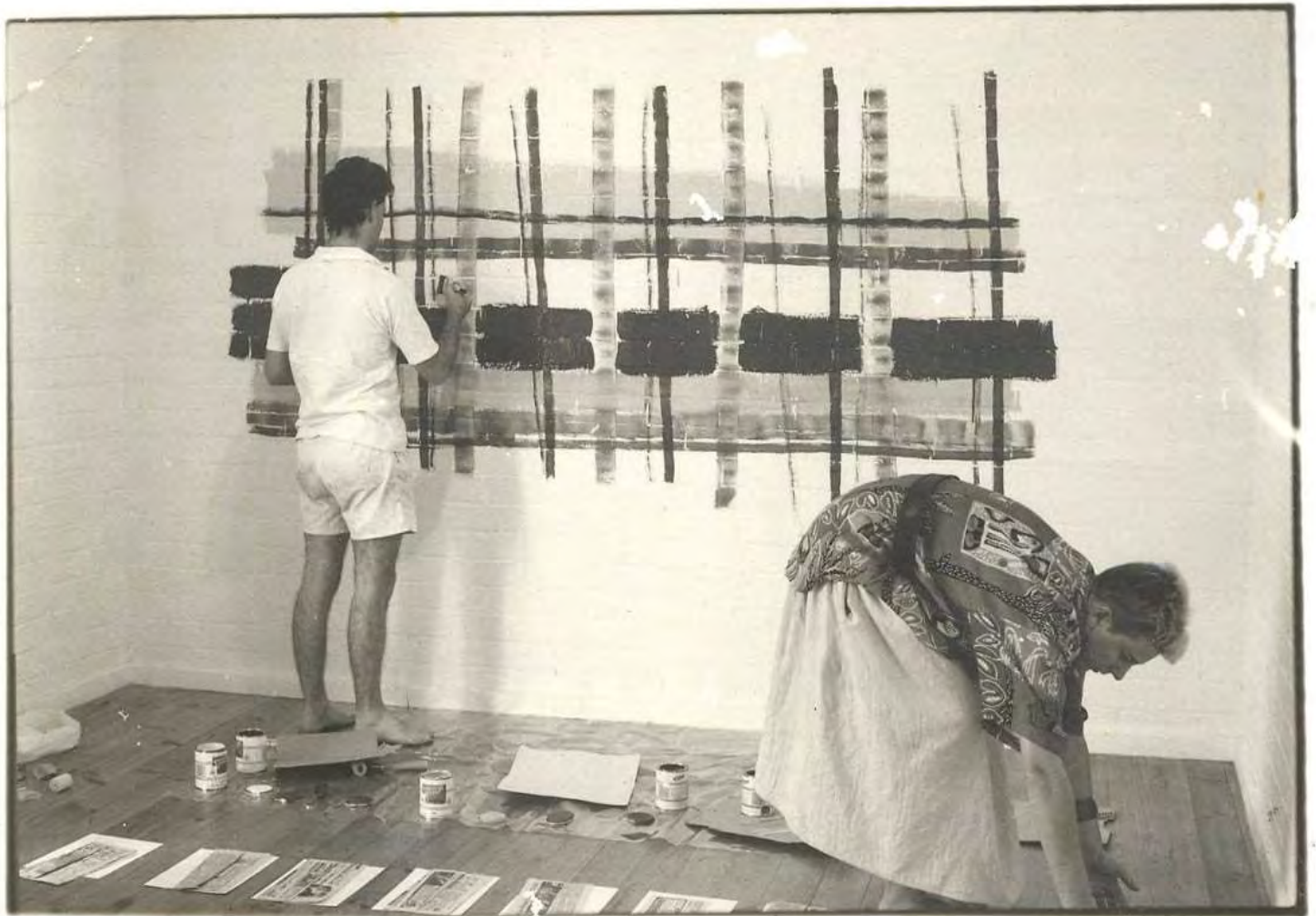


PHOTO: (L-R) ARTIST BRIAN DOHERTY WITH ARTIST LEHAN RAMSAY  
INSTALLING WORK AT BITUMEN RIVER PHOTOGRAPHER: ANNA SZOLDOS

is carefully indicated  
to a technique of f  
bodies.

**COLOURED  
LIFE**

*Sylvia Convey*

**Bitumen River Gallery  
manuka carpark  
957819**

**Opening Wed 22 Oct 6p.m.  
october 22 - november 9**

**Wed - Sun 11a.m. - 4p.m.**

*BRG is assisted by the VAB and the A.C.T. C.D.F.*



Bitumen River related artists' ephemera examples sent to us at That Space during the last two years before they transitioned into Canberra Contemporary Art Space.

# THE GREAT SHOW

# GRAFFITI

YOU KNOW, that place that looks LIKE A TOILET BLOCK IN MANUKA CAR PARK

BITUMEN RIVER GALLERY

WEDNESDAY AUGUST 20TH to →  
SUNDAY SEPTEMBER 7TH 1986

31 square meters of comments on life and the pain of it all with some spare space to add your own favorite line and graphics. SEATS PROVIDED TO HAVE A SIT AND THINK also textas and colouring pencils.

OPENING NIGHT 6PM Wednesday 20th AUGUST nibbles, wine casks and other forms of petrol provided for free

an installation instigated by GAYNOR CARDEW

WRITE THE DATE IN YOUR DIARY NOW

B.R.G. is assisted by ACT CDE and the Visual Arts Board of the Australia Council

## BITUMEN RIVER GALLERY

paintings by

GEOFF CROSBY

constructions by

IAN RAE



OPENING; WEDNESDAY 18 MARCH 6PM

CORNER OF FURNEAUX AND BOUGANVILLE STREETS, MANUKA  
B.R.G. IS ASSISTED BY THE VISUAL ARTS BOARD OF THE AUSTRALIA COUNCIL AND THE COMMUNITY DEVELOPMENT FUND OF THE A.C.T.

HOURS: WED - SUN, 11-4 PM

Above: Examples of Canberra Contemporary Art Space ephemera.



# THE WORD

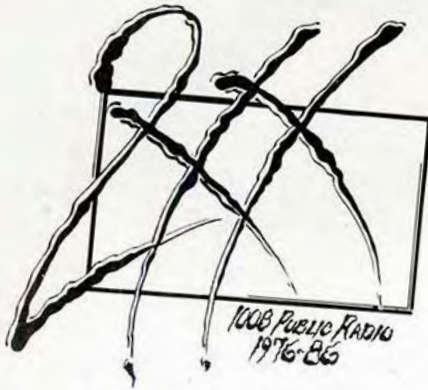
AN EXHIBITION OF WORKS UTILISING TEXT, IMAGE & THE NARRATIVE

## ARTS COUNCIL GALLERY

Gorman House, Ainslie Ave, Braddon, A.C.T. 2601  
Wed - Sat 11 - 5 pm Sun 1 - 5 pm  
or by appointment: phone (062) 47 0188

The Arts Council receives support from the Australian Council & the ACT Community Development Fund

at 6 pm Thurs. 19 February  
exhibition closes Sun 15 March 1987



CANBERRA  
SCHOOL OF ART

POST-GRADUATE STUDY  
UNDER THE GUIDANCE  
OF LEADING ARTISTS

APPLICATIONS CLOSE 31 JANUARY  
Details are available on (062) 467 869  
or by writing to  
PO Box 1561,  
Canberra ACT 2601



CRAFTS COUNCIL OF THE ACT  
1 Aspinall St., WATSON ACT 2602  
Telephone 062 412373

PHOTOACCESS



**Smith's**  
BROADWAY & STURDY STREET

**Services**  
Men's Tailor 9.30am - 5.00pm  
Fitting 9.30am - 5.00pm  
Womens 9.30am - 5.00pm  
Children's 9.30am - 5.00pm  
Kilts 9.30am - 5.00pm  
Suits 9.30am - 5.00pm

41 Northcross Street Phone 47 4499



See Guide

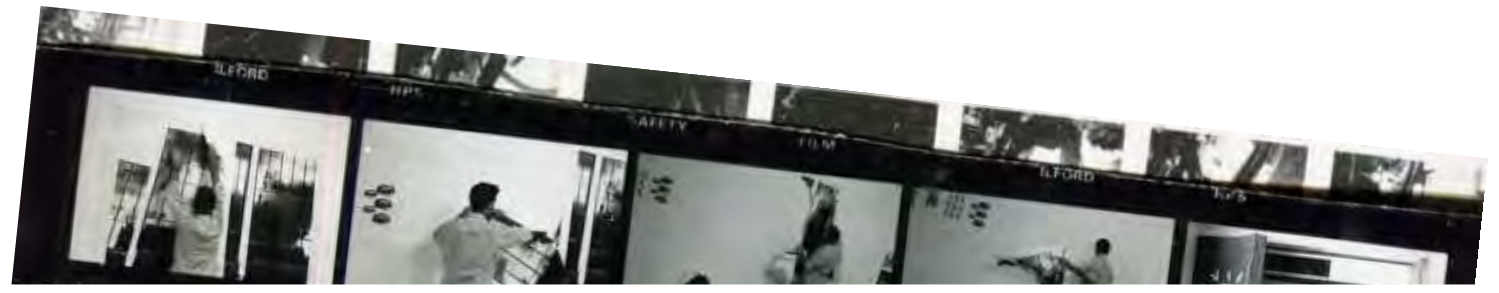
Specializing in  
Customization of  
Materials and  
Colors

1041 Street  
Phone 47 4499

**MEGALO  
SCREENPRINT**

COMMUNITY  
ACCESS  
FABRIC and  
PAPER PRINTING  
FACE-TIES  
FOR HIRE  
-TRUCKS

ARTS COUNCIL GALLERY  
Gordon House, Adelaide Ave., Braddon



Deinstalling Nowhere Utopia That Contemporary Art Space 1987

## EXTRA ZINE ISSUE # 41

### NOWHERE UOPTIA + ANYWHERE ARTIST EXCHANGE 1987

### ARI REMIX PRESENTS "SELF-MADE, ARTIST-RUN" A NEW ZINE-BASED ARCHIVAL ART INITIATIVE "THE EXTRA ZINE PROJECT" | feat. TWELVE ARTISTS, TWELVE ZINES [2022-2024]

## EXTRA

EXTRA is a Queensland/ Australian networked zine collaboration building from past, present and future 'living' archival art initiatives. We are thrilled and delighted to make this Issue # 41 Online launch today 9 July 2023. This emerging zine and zine making project builds out directly from the ARI Remix Project [2011-2026]. It places an emphasis on making and transmitting creative archival assemblages comprising little stories, hidden histories, marginalised narratives and digitised art/ artists' ephemera safeguarded in the personal and collective archives of artists. These are artists and allies who were directly involved in the expanded and expanding SEQ/ Queensland/ Australian artist-run ecology 1940 to Now.

[HTTPS://LINKTR.EE/EXTRA\\_ZINE](https://linktr.ee/extra_zine)

<https://remix.org.au>

<https://remix.org.au/extrazine>

[https://www.instagram.com/ari\\_remix](https://www.instagram.com/ari_remix)

[https://www.instagram.com/extra\\_zine](https://www.instagram.com/extra_zine)

The ARI Remix collective acknowledges and respects the traditional and ongoing custodians of the lands where we live, make and work. We pay our respects to elders past, present and emerging, and acknowledge that sovereignty has never been ceded. We support the Uluru statement from the heart.

### ARI REMIX | PROJECT TWO - Stage One 2022-2024

of this project are supported by the Queensland Government through Arts Queensland and have been assisted by the Australian Government through the Australia Council, its arts funding and advisory body.





NOWHERE /  
 UTOPIA & ANYWHERE EXHIBIT  
 IONS | BITUMEN RIVER  
 GALLERY AND THAT  
 CONTEMPORARY ART SPACE  
 EXHIBITION EXCHANGE 1987.

NOWHERE / UTOPIA | 3 - 14  
 MARCH 1987 | THAT SPACE

ANYWHERE | 18 FEBRUARY -  
 17 MARCH 1987 | BITUMEN  
 RIVER GALLERY

ANYWHERE | 20 MARCH - 11  
 APRIL 1987 | MICHAEL  
 MILBURN GALLERY

NOWHERE / UTOPIA | 31  
 OCTOBER - 22 NOVEMBER  
 1987 | CANBERRA

CONTEMPORARY ART SPACE  
 [PREVIOUSLY BITUMEN RIVER  
 GALLERY ARTIST-RUN SPACE]

NOWHERE / UTOPIA / ANYWHERE / UTOPIA / UTOPIA  
 AN EXHIBITION OF PHOTOCOPY AND FAXED IMAGES  
 FROM BITUMEN RIVER GALLERY



THAT SPACE  
 BRISBANE, QUEENSLAND  
 Tuesday 3 March to Sunday 14 March 1987

*anna zsoldos ... jay younger ... leanne ramsay ... sally hart ... brian doherly ... paul andrew ... p*



**Michael Milburn Galleries**

1st Fl 336-338 George St Brisbane Qld 4000  
 (07) 221 5199 Hrs: Mon-Fri 10am-5.30pm Sat 1-5.30pm

Opening: 5.30-8pm  
 Closing: 5.30pm